



# LED Light Bar For Horizontal Mount Multi-Deck Canopy & Shelves 3LB Series

Product: \_\_\_\_\_  
Fixture Type: \_\_\_\_\_  
Location: \_\_\_\_\_  
Contact Phone: \_\_\_\_\_  
Contact e-mail: \_\_\_\_\_

Standard Sizes: 2', 3', & 4'  
Canopy & Shelf Fixtures  
Aluminum Gray Housing

## PRODUCT SPECIFICATIONS

V7/13.3 (page 1 of 2)

**Luminaire:** 3<sup>rd</sup> Generation LB Series (replaces 2LB Series). Rugged aluminum alloy gray extrusion, aluminum end plates with gasket seals, and IP67 Wet Location rating.

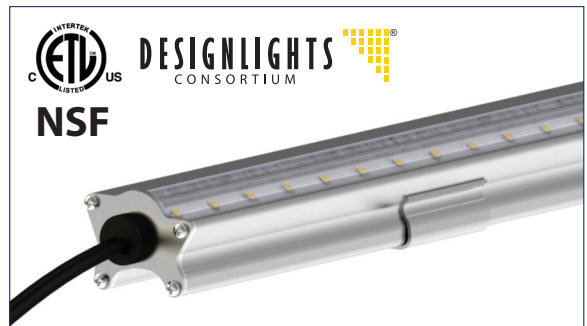
**LED:** Single PCB with LM80 certified Nichia/Samsung brand white light emitting diodes (LEDs), each with a clear hemispherical plastic integral lens vertical aligned aimed at the horizon. 80+ CRI, standard is 4000K CCT, 3500K and 5000K also available.

**Lens:** Precision optical engineered clear PMMA lenses, design specific for fixture application.

**Dimming Capable**

## APPLICATION

**Introducing the 3<sup>rd</sup> Generation Display Case LED Light Fixture from 1 Source LED!** The 3LB Series is unlike any other LED fixture on the market: The **ONLY** universal fixture design for **BOTH** VERTICAL REACH-IN DOOR and HORIZONTAL MULTI-DECK CANOPY/SHELF refrigerated or freezer display cases. "Best In Class" performance is achieved through a series of patented optical lens designs and use of new generation Nichia/Samsung high performance LM80 NAVLAP certified LEDs. **NOW** is the time to retrofit your cases: **EFFICIENCY** at less than 4 watts per linear foot, the lowest **PRICING** structure in the industry, and **PERFORMANCE** that is unmatched by any competitor light fixture.



Included Hardware: (2) fixture mounting clips as applicable

## DOCUMENTATION

**ETL Report #:** 3177542, Certified To: UL 2108, UL 8750, CSA C22.2#9.0

**ETL Listing:** Suitable For Wet Locations

**Labels:** ANSI/NSF 2 Issue:2010/05/20 Food Equipment

**Qualified:** Lighting Design Lab (LDL), DesignLights Consortium®

**Patents:** US Patent filed, Patent Pending

**Tests:** Independent Test Lab, Boulder, CO. (NRTL)  
Tested to IESNA-LM79-08, LM-80 Procedures

## LIFE RATING

80,000 Hrs, TM21 L70 (6k) In-Situ Projection > 88,000 hrs

## DRIVER (recommended)

**1Source Part #:** HR80L-24

**Advance Part #:** LED-120A-0024V-33F

24V DC, 3.3A, electronic, Class 2, 80-watts

## DIMMING CONTROLLER (recommended)

**1Source Part #:** DC-24VDC

**Ramp type:** 100% to 15%

Typical 4.0 Watts in Dimmed State

## ACCESSORIES

### DRIVER



**1Source Part#:** HR80L-24  
**(recommended)**  
24VDC, 3.3A  
Electronic Class 2  
UL Listed

### DIMMING CONTROLLER



**1Source Part#:** DC-24VDC  
**(recommended)**  
Ramp type: 100% to 15%  
Typical 4.0 Watts in Dimmed State  
24VDC, Class 2

1 Source LED • 622 Pinnacle Place, Livermore CA 94550

Toll Free 888.527.7660 • Sales@1SourceLED.com • 1SourceLED.com

LED Lighting Solutions The World Needs Now

# LED Light Bar for Refrigerated Display Cases

## 3LB Series

PERFORMANCE

V7/13.3 (page 2 of 2)

### ORDERING & SPECIFICATIONS

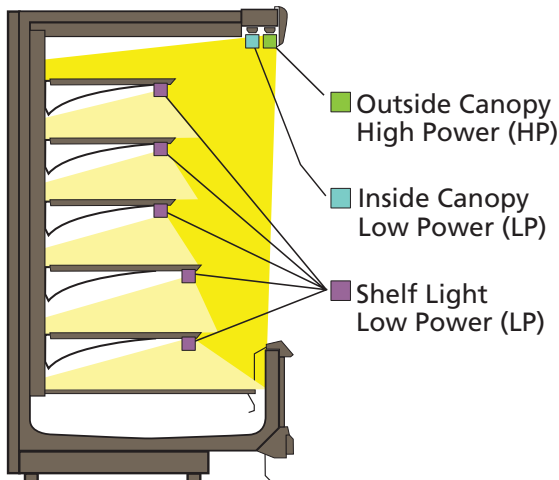
#### 3LB Series • Multi-Deck Display Cases - Canopy & Shelves

Model Number	Application	Overall Fixture Length (inches)	W x D Dimension (mm)	Optical Lens Series	CCT	Total # Of LEDs Per Fixture	Total Input Watts	Total Lumens	Efficacy (LPW)	CRI
<b>Multi-Deck Horizontal Case: Outside Canopy Fixture (High Power)</b>										
<b>3LB-4C-M060-4100K-HP</b>	(CANOPY) 4' Fixture	46.5"	28 x 21	60°	4000K	84	21.4	1,567	73.2	84
3LB-4C-M060-3500K-HP	(CANOPY) 4' Fixture	46.5"	28 x 21	60°	3500K	84	21.4	1,391	65.0	84
<b>3LB-4C-M060-3000K-HP</b>	(CANOPY) 4' Fixture	46.5"	28 x 21	60°	3000K	84	21.4	1,284	60.0	84
3LB-3C-M060-4100K-HP	(CANOPY) 3' Fixture	35.0"	28 x 21	60°	4000K	63	16.6	1,164	70.1	84
3LB-3C-M060-3500K-HP	(CANOPY) 3' Fixture	35.0"	28 x 21	60°	3500K	63	16.6	1,079	65.0	84
3LB-3C-M060-3000K-HP	(CANOPY) 3' Fixture	35.0"	28 x 21	60°	3000K	63	16.6	996	60.0	84
3LB-2C-M060-4100K-HP	(CANOPY) 2' Fixture	23.5"	28 x 21	60°	4000K	42	11.2	785	70.1	84
3LB-2C-M060-3500K-HP	(CANOPY) 2' Fixture	23.5"	28 x 21	60°	3500K	42	11.2	728	65.0	84
3LB-2C-M060-3000K-HP	(CANOPY) 2' Fixture	23.5"	28 x 21	60°	3000K	42	11.2	672	60.0	84
<b>Multi-Deck Horizontal Case: Inside Canopy &amp; Shelf Fixture (Low Power)</b>										
<b>3LB-4S-M120-4100K-LP</b>	(CANOPY) or (SHELF) 4' Fixture	46.5"	28 x 21	120°	4000K	28	11.6	857	73.9	84
3LB-4S-M120-3500K-LP	(CANOPY) or (SHELF) 4' Fixture	46.5"	28 x 21	120°	3500K	28	11.6	754	65.0	84
<b>3LB-4S-M120-3000K-LP</b>	(CANOPY) or (SHELF) 4' Fixture	46.5"	28 x 21	120°	3000K	28	11.6	696	60.0	84
3LB-3S-M120-4100K-LP	(CANOPY) or (SHELF) 3' Fixture	35.0"	28 x 21	120°	4000K	21	8.7	643	73.9	84
3LB-3S-M120-3500K-LP	(CANOPY) or (SHELF) 3' Fixture	35.0"	28 x 21	120°	3500K	21	8.7	566	65.0	84
3LB-3S-M120-3000K-LP	(CANOPY) or (SHELF) 3' Fixture	35.0"	28 x 21	120°	3000K	21	8.7	522	60.0	84
3LB-2S-M120-4100K-LP	(CANOPY) or (SHELF) 2' Fixture	23.5"	28 x 21	120°	4000K	14	5.8	429	73.9	84
3LB-2S-M120-3500K-LP	(CANOPY) or (SHELF) 2' Fixture	23.5"	28 x 21	120°	3500K	14	5.8	377	65.0	84
3LB-2S-M120-3000K-LP	(CANOPY) or (SHELF) 2' Fixture	23.5"	28 x 21	120°	3000K	14	5.8	348	60.0	84



**Bold Text model numbers are DesignLights Consortium® qualified luminaires.**  
Other model numbers are pending and in progress as a "family" qualification.

### ORDERING CONFIGURATION & MOUNTING HARDWARE



All 3LB fixtures should be ordered by model number with install application (**CANOPY**) or (**SHELF**). All (CANOPY) fixtures are equipped with ROTATING FIELD ADJUSTABLE MOUNTING BRACKETS. All (SHELF) fixtures are equipped with Qty. 2 each MAGNETS and Qty. 2 each MOUNTING CLIPS. MAGNETS can be removed if not needed.

**(CANOPY)**  
Rotating Bracket Mount



Rotation Set at 90°



Rotation Set at 180°

**(SHELF)**  
Magnets (2) + Mounting Clips (2)



Magnet Mount Clip



Magnet Mount Clip Installed

1 Source LED • 622 Pinnacle Place, Livermore CA 94550  
Toll Free 888.527.7660 • Sales@1SourceLED.com • 1SourceLED.com

LED Lighting Solutions The World Needs Now